

## Update Features

May 2017

Version 06.21

Build 56



**TELUS | HEALTH**  
Assyst Rx-A

### What's New?

Hyperlinks are now being used in the Update Features list. An underlined title in the What's New section will identify the text as a hyperlink. Clicking on the selected hyperlink will move the cursor to a section in the document for more detailed information. The 'What's New' section has the most significant changes of the update, while other enhancements are included in their appropriate sections. New enhancements have been included in the Update Features for this software release. Some of these enhancements are:

### Assyst-Rx-A Enhancements

[uniPHARM FTP Ordering](#) – Orders can now be transmitted using FTP instead of email.

[Perpetual Inventory Report](#) – A new inventory report will show the complete audit for all drugs.

[Plain Paper Landscape MAR Chart](#) – New MAR Chart format.

[Prescription Queue](#) – We have added additional functionality to this feature.

[Patient Quick Maintenance](#) – The following functionality has been added to the Patient Quick Maintenance report:

- Add a range for copay so they could only see Rx's with a zero copay, those that are greater than a certain dollar value or those > 0.
- Add another detail option that will replace markup column with the copay amount.
- Allow this report to be called from the end of day.
- Allow report to be exported.



Assyst Rx-A Enhancements

uniPHARM FTP Ordering

uniPHARM stores can now transmit their orders to uniPHARM using the FTP service instead of email. This will require some changes in the setup of the vendor file and the TC-FTP application.

Perpetual Inventory Report

This new report is available from the Drug Audit by changing the report selection from Detail to Perpetual Inventory. There are a few options within this report – Page Break by Drug, Detail – None, Detail – Rx and Detail – Patient. At the end of this report totals are displayed for each action performed on the drugs, along with the breakdown of Number of Action Type entries, the Dollar Amount, Total Dollars and a complete Totals line. There is also a Signature line at the bottom of the report.

Page Break by Drug – This option will print one drug per page if checked.

Detail – None – This option will print the drugs that meet the filter specifications set by the User. This report will show a single line of the drug which will include the Drug Name, DIN, Mfg, Form and the Open Onhand value. This report format will be a single line entry of the action taken on the drug. The single line will show the Date, Action Type (RX – Prescription, RCV - Receiving), Quantity, Size, Total, Total Cost, Unit Cost, Reference, Onhands, Pharmacist and Drug Indicator (<R> - Reportable).

Detail – Rx – This option will print the drugs that meet the filter specifications set by the User. This report will show a single line of the drug which will include the Drug Name, DIN, Mfg, Form and the Open Onhand value. This report format will be a multiline entry for prescriptions on the drug. The multiline will show the Date, Action Type, (RX – Prescription, RCV - Receiving), Quantity Size, Total, Total Cost, Unit Cost, Reference, Onhands, Pharmacist, Drug Indicator (<R> - Reportable), Patient – Name and Address as well as the Doctor – Name and Address for prescription entries.

Detail – Patient – This option will print the drugs that meet the filter specifications set by the User. This report will show a single line of the drug which will include the Drug Name, DIN, Mfg, Form and the Open Onhand value. This report format will be a single line entry of the action taken on the drug. The single line will show the Date, Action Type (RX – Prescription, RCV - Receiving), Quantity, Size, Total, Total Cost, Unit Cost, Reference, Onhands, Pharmacist and Drug Indicator (<R> - Reportable). This format will display the breakdown of each drug on the report the Calculating Starting Inventory, Total Qty Received, Total Qty Dispensed and the Current Inventory. This report will still show all the totals at the bottom of the report and the signature line.

FEBRUARY 19, 2017		10:39		TELUS HEALTH		PAGE: 1			
INVENTORY AUDIT									
FROM: 2017/02/19		TO: 2017/02/19		Narcotic, Reportable, Controlled, Triplicate					
Date	Type	Patient Name	Quantity	Total Cost	Reference	Txt#	Onhands	Time	Pharmacist
Drug: CELEBREX 100MG **									
17/02/19	RCV	MCKESSON CANADA	200.000	140.68 (1)	TEST-REPORT2		66.000	<R>	
17/02/19	RX	CIVILISE, GELATO	30.000	21.10 (1)	0123491	1209399	266.000	10:30	EA
Calculated Starting Inventory:		66.000							
Total Qty Received:		200.000							
Total Qty Dispensed:		30.000							
Current Inventory:		236.000							
Drug: CIPRALEX 10MG XXXX LUN									
17/02/19	RCV	MCKESSON CANADA	100.000	325.54 (1)	TEST-REPORT2		95.000		EA
17/02/19	RX	CIVILISE, GELATO	30.000	98.65 (1)	0123490	1209398	195.000	10:29	EA
Calculated Starting Inventory:		95.000							
Total Qty Received:		100.000							
Total Qty Dispensed:		30.000							
Current Inventory:		165.000							
Drug: GABAPENTIN 100 MG **PMS									
17/02/19	RCV	MCKESSON CANADA	100.000	7.49 (1)	TEST-REPORT2		549.000	<R>	EA
17/02/19	RX	CIVILISE, GELATO	30.000	2.25 (1)	0123489	1209397	649.000	10:29	EA
Calculated Starting Inventory:		549.000							
Total Qty Received:		100.000							
Total Qty Dispensed:		30.000							
Current Inventory:		619.000							
		#	Amount		Total				
Received:		3	477.01		477.01				
Prescriptions:		3	122.00		122.00				
Total:		6	599.01		599.01				
Signature: _____									

### Plain Paper Landscape MAR Chart

Plain Paper (Landscape) requires a new bitmap file.

The remaining quantity will print at the end of the Doctor line (after the Qty, Form, Mfg).

If the prescription is deferred, the word DEFER will print on the last line between the last filled date and DIN.

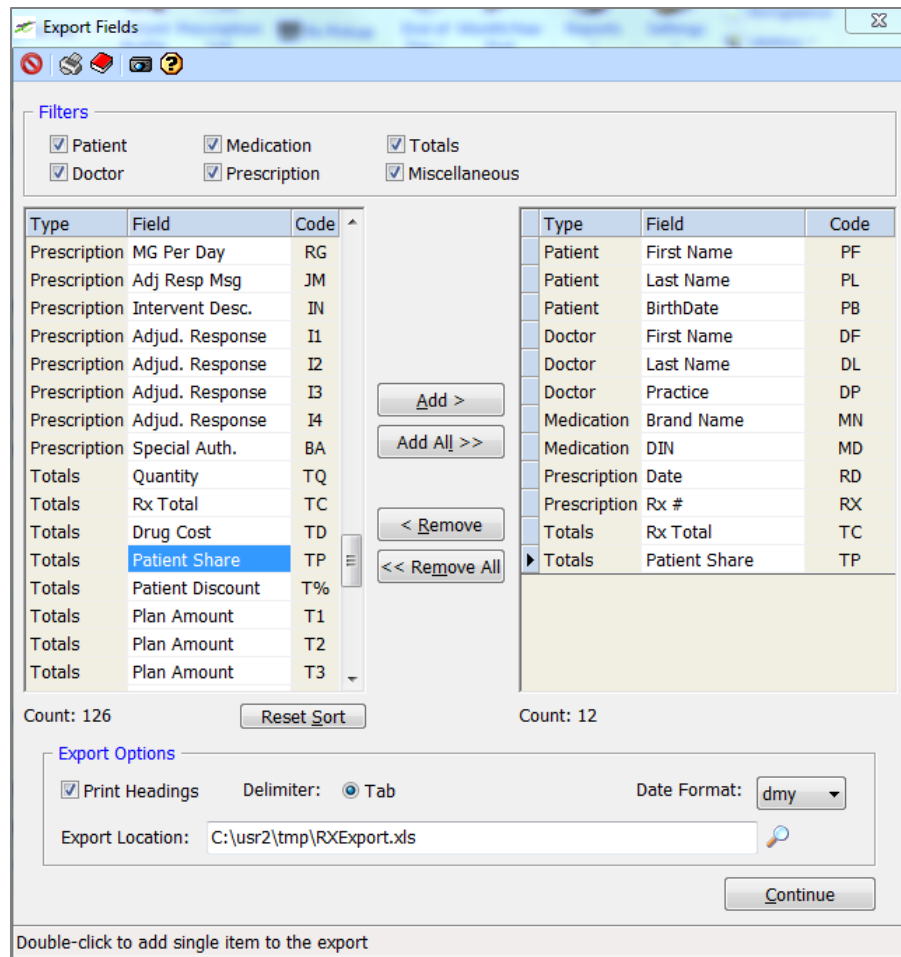
### Prescription Process

Prescription Queue – when you escape out of a prescription that was loaded from the queue, it will no longer be deleted from the queue. The prescription status will change from Ready to Processing if another User is filling that prescription and it will be skipped over for the Fill Next in Queue.

Saskatchewan Only –The DIS TX Detail window (with a blank Rx# field) will now refresh the fields correctly. The DIS Rx-TX IDS and Local Rx-TX IDS will now show as blank when a prescription exits only on the local system or only on DIS regardless of what prescription was looked at previously.

### Patient Quick Maintenance

We have added a Copay filter to this window so that Users can request results based on the patient shares paid on prescriptions. We have added another View option called Default w/Copay in the Report Options window. In the Report Options using the View – Detail, Master of Default w/Copay, there is an Export option. In the Export Fields window there are numerous fields that a User can select and create a custom report which can be saved to the library.



### Patient Medication Exchange

New bookmarks related to printing of generic drug name and remaining quantity have been added:

RX\_REM\_LEFT – Prints remaining quantity as a numeric value only

RX\_REP\_LEFT – Prints repeats as a numeric value or if repeats = 0 remaining prints with the form full name if we can translate it (i.e. if form on drugs is tabs or cap, we will print tablets or capsules) or the form as entered if we cannot. If not form is entered, the remaining quantity will be followed by remaining.

RX\_FILLS\_LEFT Will continue to only print refills.

DRUG\_GENERIC – Prints the generic drug name if available, otherwise the drug name will print.

### Assyst-Rx-A Application Changes

#### Alberta Blue Cross Formulary

The formulary will now download and run as expected.

#### Allergies

In Patient Maintenance, when accessing the allergies window, cosmetic changes to make these windows follow the same layout between First Data Bank and RxVigilance.

#### Batch Fill

When in Batch Fill (and access the Nursing Home window from prescription process), the application will no longer freeze.

When manually filling prescriptions from within batch fill, there will no longer be a status 91/02 on FILES.

When filling invalid prescriptions from the batch fill window, the prescriptions will be removed from the screen as they are completed.

#### Billing Calculation Maintenance

The save function in this window has been changed for consistency across the application.

#### Compounds

When adding an ingredient to a compound, 3 decimal places can be entered. If 2 decimal places are entered and saved, a zero is added to the end of the quantity. Once saved the quantity cannot be changed to add the third decimal place.

#### DIS Unsent Report

We corrected the default date logic (November) so that the number of days in the month default properly.

#### Drug Maintenance

Cosmetic changes have been made to the Flags tab, the window has been expanded and the labels will not overlap.

Ordering tab, when an order number is added or modified, we will now left justify this field so that any spaces entered before the numbers are removed.

#### Drug Quick Maintenance

Previously when this report was generated, zero cost items were included. Now, with the extended check box selected, extended cost now looks at onhands x pack cost/pack size to determine if the entry should be included in the selected range. When extended is unchecked, quick maintenance will look at pack cost 1, 2 and/or 3 as ranges are set.

#### Item Notes

Changes have been done to improve the function of notes to save field and flags when requested.

#### Label Maintenance

Label Code RF, the Refillable or Not Refillable will now print on the label using the Quick Label Print window.

We have added new label codes – XN (Will print Prescription Notes that are flagged to Print on Label) and PN (Will print Patient Notes that are flagged to Print on Label).

Functionality has been added to be able to use a combination of label codes for patient last and first name (PL,PF) along with short and long codes (SL,SF)

### Packing Device

Users using a packaging device, the Start Date in the Nursing Home window will properly display the date.

### Patient Maintenance

When adding coverages in Patient Maintenance, the carrier ID will no longer default from the card image.

### Patient Medication Exchange

Changes were made on how notes print in custom tables with a bookmark that will only print Rxs with notes flagged to print in a table. This will still only print the most current selected note in the table. If you select a single script in the report column it still prints all the selected notes for that Rx, this has not changed.

### Pill Pak

The paper report will no longer strip off the 0 on a quantity if entered in the top section of the paper report. This now matches the labels, Dispill reports and the bottom section of the paper report.

### Prescription Process

DCP Extract – Some cleanup has been done with the date fields to ensure a more seamless process.

Drug search from the patient profile will now behave the same as the search from Drug Lookup.

Nursing Home window, if changes are made in the Next Fill section, there will no longer be a status 91/02 on MANSIG error.

Part Fills – For BC and SK sites, the Refills will no longer be calculated on part fills.

Price Rx – When a User changes the Qty field on a prescription in the grid, the amounts will now calculate correctly.

Price Rx – If the patient does not have a Family Doctor and a prescription is put into the queue from this window, we will now validate the doctor field on the Process button. If there is no doctor entered, the User will be put into the Doctor field and the One Line Help will state 'Doctor Required'.

Saskatchewan Only –The DIS TX Detail window (with a blank Rx# field) will now refresh the fields correctly. The DIS Rx-Tx ids and Local Rx-Tx ids will now show as blank when a prescription exits only on the local system or only on DIS regardless of what prescription was looked at previously.

### Reminders

Calendar View will now display the entry even if there is a blank line in the note/comment section.

### Reporting

**Drug Audit** - one line help information has been added to Perpetual Inventory and Complete Audit report options, as well as the ability to add custom title to both these report options.

**Drug Usage** – Changes have been made to the alignment of the header information. Now the usage amounts will line up with the headers. The continue button has had the Alt+C keyboard shortcut added.

MAR Charts (Plain Paper Portrait) will now print the zero before a decimal place if the admin quantity is less than 1. The same will also be true for the fill quantity. This fill quantity fix will also be for Free format, Manrex, and Yellow MAR formats.

**Narcotic Audit** – The report will now reset the defaults properly and will only show a single entry for the prescription.

**Accumulated Totals** – When accessing the Accumulated Totals Report for All Third Parties, a COBOL not responding message (when using the escape key to exit) will no longer display.

### System

A 91/02 error will no longer display when running "file listing" from system logs.

### Third Party Communications

There have been some changes made in the background of the communications to the third parties for a more secure connection, called TLSrelay.