



Kroll Version 10 Service Pack 28

Feature Release Notes (Addendum)

August 2023

Table of contents

Kroll Version 10 Service Pack 28 Feature Release Notes.....	2
General	2
[KRL-8223] Update the “Cancel Rx” prompt to indicate that a prescription paid via PharmaConnect will need to be manually refunded at the store	2
[KRL-9742] Add Auto Refill Date Calculation options to Store Configuration	2
[KRL-9900] Add “Prompt to print” option in Workflow for individual labels	3
[KRL-9907] Enhance workflow label printing options for some actions	4
Immunizations.....	6
[KRL-9778] Do not allow future dating an immunization.....	6
PharmacyLink	7
[KRL-9335] Update the Kroll PLC Service and Kroll to allow guest requests to come into the ADT queue.....	7
[KRL-9337] Add Store Configuration options to support guest functions	7
Program Update.....	8
[KRL-10278] Change Kroll program update to log more status messages during installation	8
Reports	9
[KRL-10457] Missing Rx Images Report to show only Mixture prescriptions when searching for missing Mixture Instructions.....	9

Kroll Version 10 Service Pack 28 Feature Release Notes

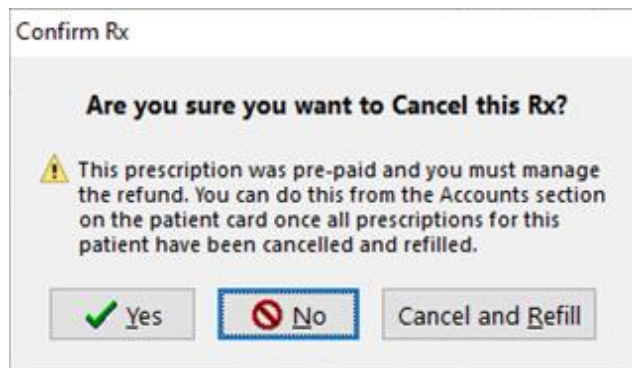
This document is a compilation of new Features in Kroll Version 10 Service Pack 28. The purpose is to keep users informed of changes to the software and to help users implement and adapt to those changes.

General

[KRL-8223] Update the “Cancel Rx” prompt to indicate that a prescription paid via PharmaConnect will need to be manually refunded at the store

Feature

The prompt displayed when cancelling a prescription “**Are you sure you want to cancel this Rx?**” has been updated. When cancelling a prescription that was pre-paid via PharmaConnect, the prompt now indicates that the user must manage the refund manually.



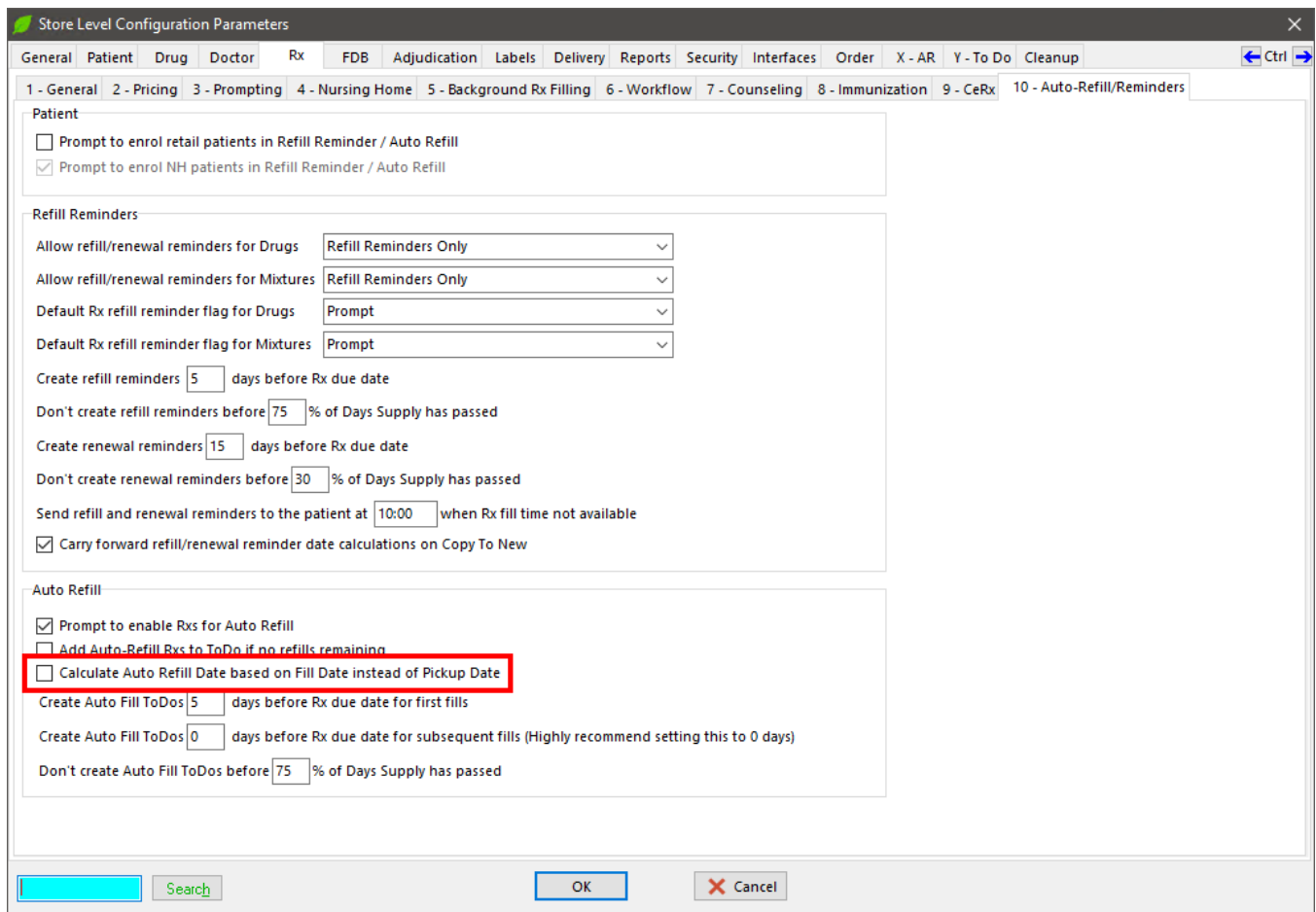
[KRL-9742] Add Auto Refill Date Calculation options to Store Configuration

Feature

A new option has been added to the Store Level Configuration Parameters:

- **Calculate Auto Refill Date based on Fill Date instead of Pickup Date**

When enabled, the prescriptions' Auto Refill date will be calculated using the date they were filled instead of the date they were picked up.



[KRL-9900] Add “Prompt to print” option in Workflow for individual labels

Feature

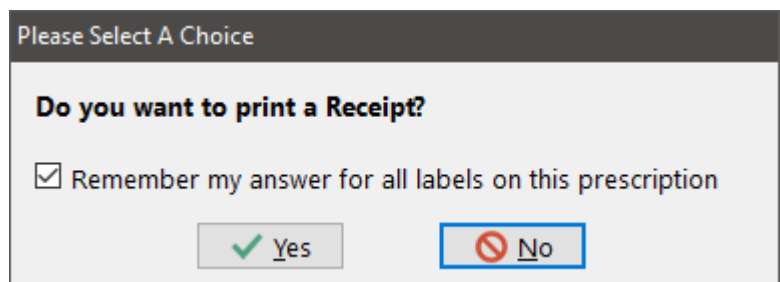
Kroll can now prompt users to print individual thermal labels when filling a prescription, for a selection of labels.

When a label print action is set to Prompt users will be prompted to print the corresponding label during the prescription fill process.

A “Remember my answer for all labels on this prescription” option is available on the prompt.

When enabled, the user’s answer will be applied to all subsequent print actions that are set to Prompt on this prescription.

A new option has been added to the Store Level Configuration Parameters to define the default status of the above option:



- When prompted to print a label, remember my answer for all labels

The screenshot shows the 'Store Level Configuration Parameters' dialog box, specifically the 'Labels' tab. The interface includes several sections for configuring label printing options:

- Regular labels (retail) and (nursing home):** Both are set to 'Kroll Laser Labels' with an 'Advanced' button.
- Print labels for "not dispensed" Rxs:** Set to 'Always' with the 'Print labels' checkbox checked.
- Print labels for cancelled Rxs:** Set to 'Always' with the 'Preview labels' checkbox unchecked.
- Print labels for unfilled Rxs:** Set to 'Always' with the 'Print labels for unit dose Rxs' checkbox checked.
- Print labels for cancelled Rx when rebilling:** Set to 'Prompt'.
- Print Options:**
 - First drug name: 'Brand' (checked 'Bold first drug name')
 - Second drug name: 'Generic' (checked 'Prefix second drug name')
 - Narcotic RxNum prefix: (empty)
 - Print in colour: (unchecked)
 - Show profile and label reprints as filled: (unchecked)
- Header:**
 - Font: 'Calibri', Font Size: '11', with 'B', 'I', 'U' buttons.
 - Logo: 'None' selected, 'Store logo' and 'Pre-printed, width: 15 mm' options are also present.
 - Print headers...: 'On laser labels', 'On NH laser labels', and 'On lower right label' are checked.
 - For patient 'Label Header' comments, replace: '(NONE)' selected.
- Offsets:** A section titled 'Adjust printer label offsets' with input fields for 'Warning label left', 'Dot matrix label left', 'Hardcopy top offset', 'X offset for bottom headers', and 'Y offset for bottom labels', all set to '0 mm'.

A red box highlights the checkbox labeled 'When prompted to print a label, remember my answer for all labels' in the 'Print Options' section.

[KRL-9907] Enhance workflow label printing options for some actions

Feature

New options are available to control the prompt to print individual thermal labels when filling a prescription.

The **"Prompt to print label"** dropdown menu has been added to the Workflow Action configuration of selected print actions. The following four options are available:

- **Default:** do not prompt and use current logic to determine if the label will be printed, looking at the Nursing Home settings.
- **Always:** do not prompt and always print if other settings allow it.
- **Prompt:** prompt the user to print the label.
- **Never:** do not prompt and do not print (label can be reprinted on demand).

Workflow Action

Workflow Name: Fill Regular Rx (LLAdvancedWF)

Workflow Action: Print Vial Label

Workflow Queue: Rxs In Progress

Users permitted to complete this action

- Pharmacist
- Pharmacist Intern
- Pharmacy Student
- Licensed Technician
- Pharmacy Tech Student
- Pharmacy Assistant
- IT Support

Print For: Every Rx

Prompt for Printer (when applicable)

Don't print for robotic packager Rxs

Prompt to print label: [Dropdown menu open with options: Default, Always, Prompt, Never]

Save Cancel

For the **Delivery Label**, **Privacy Label** and **Receipt** specifically, one of the above options can be selected separately based on the prescription's Patient Pays amount.

The “**Prompt to print when patient pays = \$0**” and “**Prompt to print when patient pays > \$0**” dropdown menus are available in the Workflow Action configuration.

Workflow Action [Close]

Workflow Name: Print For:

Workflow Action: Prompt for Printer (when applicable)

Workflow Queue:

Users permitted to complete this action

<input checked="" type="checkbox"/> Pharmacist	<input checked="" type="checkbox"/> Licensed Technician
<input checked="" type="checkbox"/> Pharmacist Intern	<input checked="" type="checkbox"/> Pharmacy Tech Student
<input checked="" type="checkbox"/> Pharmacy Student	<input checked="" type="checkbox"/> Pharmacy Assistant
	<input checked="" type="checkbox"/> IT Support

Prompt to print when patient pays = \$0:

Prompt to print when patient pays > \$0:

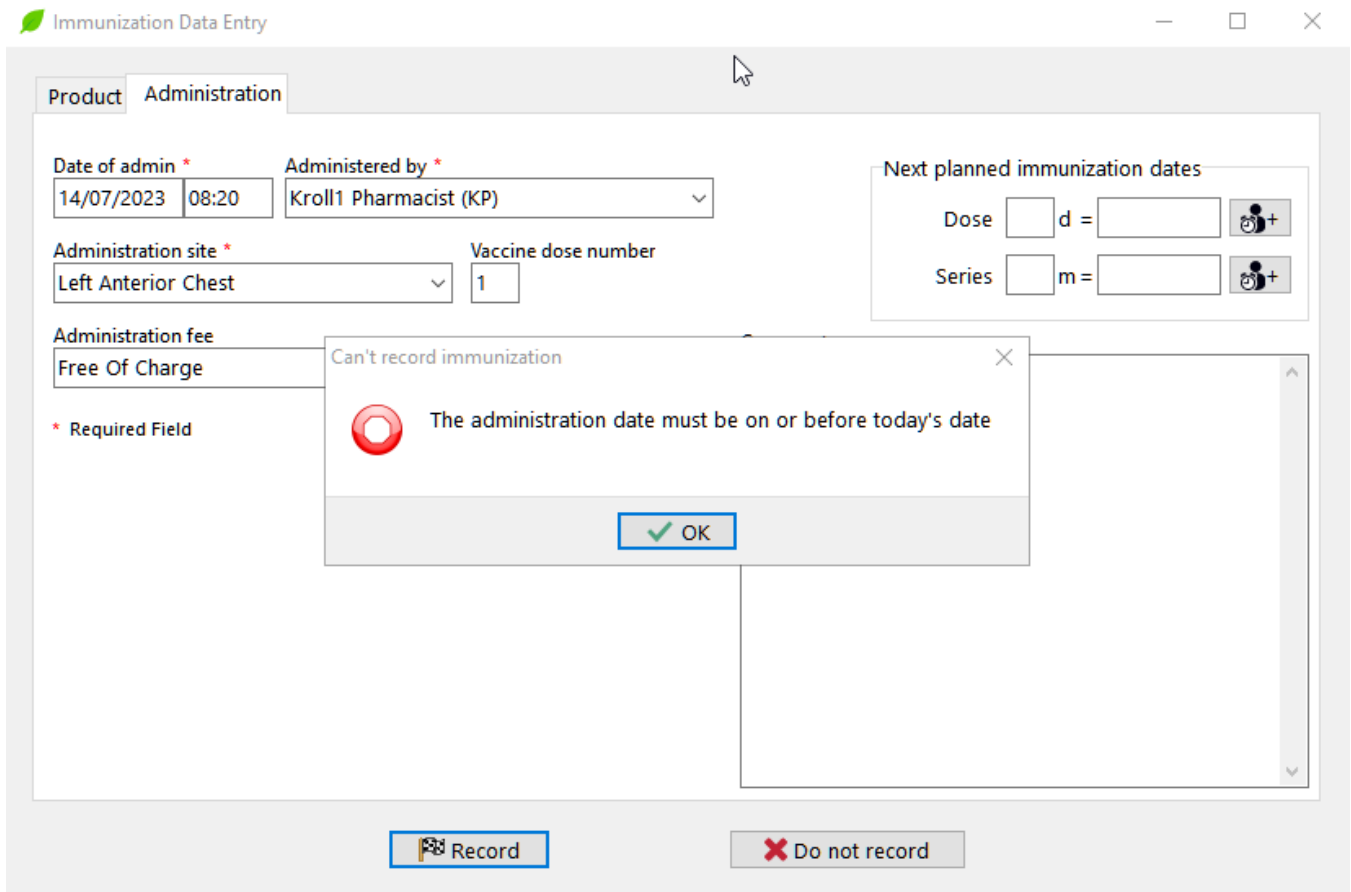
Save Cancel

Immunizations

[KRL-9778] Do not allow future dating an immunization

Feature

Kroll now prevents users to future-date Immunizations. When a user attempts to record an Immunization with a "Date of admin" set in the future, a hard-stop prompt with the message "**The administration date must be on or before today's date**" is displayed and the record is not created.



PharmacyLink

[KRL-9335] Update the Kroll PLC Service and Kroll to allow guest requests to come into the ADT queue

Feature

Kroll now supports requests sent by patients signed into PharmaConnect as Guests (not registered to a pharmacy).

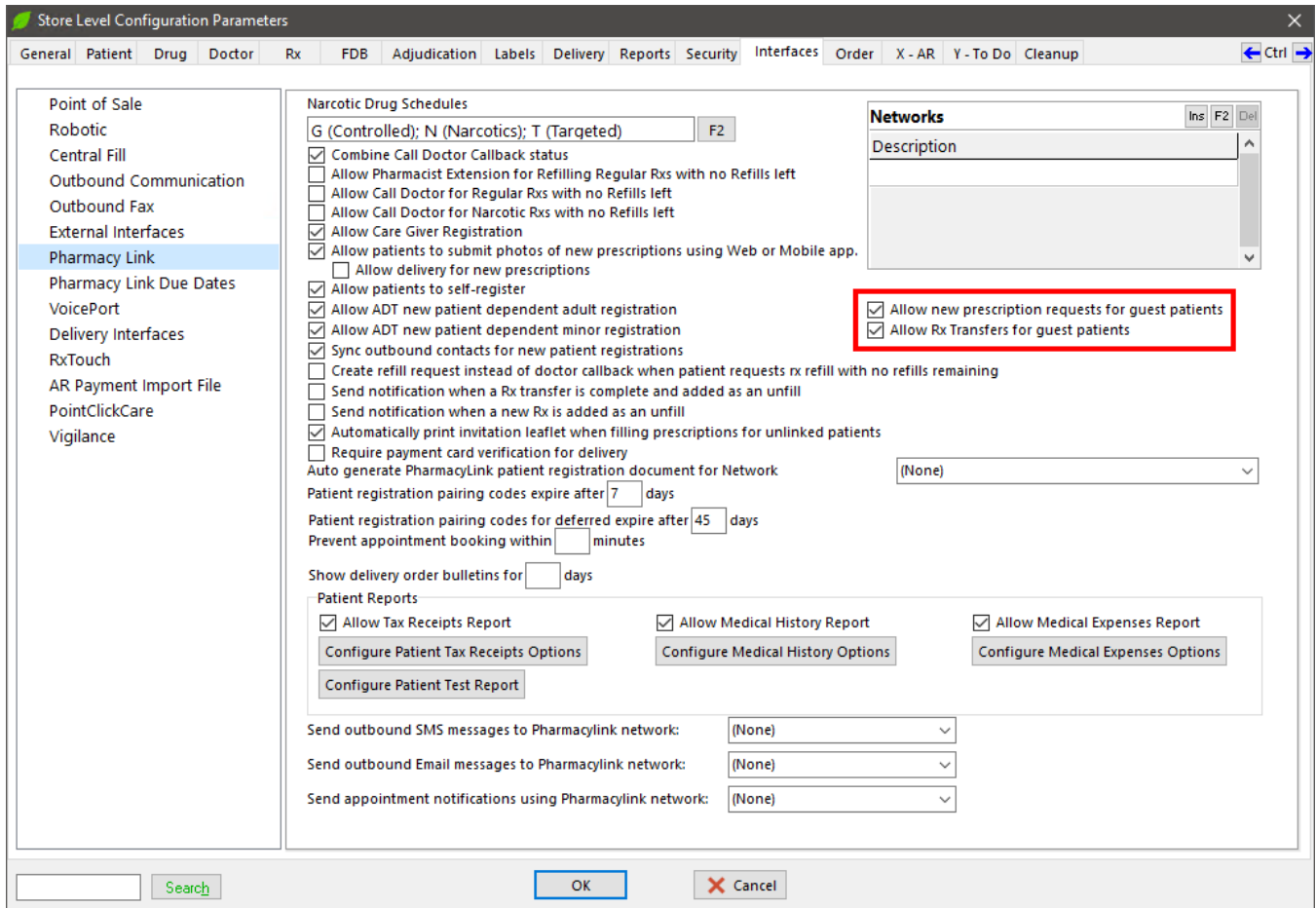
New prescription and prescription transfer requests coming in from guest PharmaConnect patients will be added to the ADT queue in the F9-Workflow screen. When processing a request, users will be able to create a new patient or link it to an existing one.

[KRL-9337] Add Store Configuration options to support guest functions

Feature

Two new options have been added to the Store Level Configuration Parameters to control PharmaConnect guest patient requests.

- Allow new prescription requests for guest patients
- Allow Rx Transfers for guest patients



Program Update

[KRL-10278] Change Kroll program update to log more status messages during installation

Improvement

The Kroll Program Update has been improved to display and log more status messages during installation. Users will receive real-time updates on the progress of the installation, ensuring that the status messages align with the actions being taken by the program. This improved messaging will enhance the user experience and provide a more accurate representation of the installation process.

Reports

[KRL-10457] Missing Rx Images Report to show only Mixture prescriptions when searching for missing Mixture Instructions

Improvement

The Missing Rx Images Report has been improved to only show Mixture prescriptions when generating the report for the Missing Image Type: **Mixture Instructions**. Moreover, the Drug names in the report will be preceded by the @ symbol for mixtures.

Missing Rx Images Report Kroll pharmacy, Halifax NS A1A 1A1							
ReportParameters Only showing patients from store Main Rx Filled Between - 01-01-2023 to 15-08-2023 Missing Image Type: Mixture Instructions Printing Unfills Exclude fee for service Rxs							
Missing Rx Images Report							Printed on: 15-08-2023 09:29:23
Orig Rx	Rx Num	Fill Date	Patient	Drug	Status	Disp Qty	Doctor
1000069	1000069	26-Jun-2023	Doctor's,Office	@Diazemin D	StockTransfer	14	Dr. Pmp, Doctor
1000085	1000085	28-Jun-2023	Kroll, Betty	@Mixture A	Unfilled	50	Dr. Douglas Buffet, Andrew
1000140	1000140	01-Aug-2023	Kroll, Betty	@Mixture A	Filled	50	Dr. Hanlon, Genevieve Donathilda
1000140	1000141	01-Aug-2023	Kroll, Betty	@Mixture A	Filled	50	Dr. Hanlon, Genevieve Donathilda